

GENERAL

Tractive Effort Starting 33,000 lbs.
 Factor of Adhesion 3.36
 Tractive Effort Continuous 11,000
 Speed Continuous 7½ mph
 Maximum Speed 20 mph

ENGINE

Type, English Electric, 6KT 4 stroke
 Continuous Rating 350 H.P.
 Cylinders (6) 10" bore x 12" stroke
 Speed on load 330 to 680 rpm

ELECTRICAL MACHINES

Main Generator type EE,801/6C
 Continuous Rating 430v, 441 amp., 190 KW, 680 rpm.
 Auxiliary Generator type EE/905
 Continuous Rating 85v, 47amp., 4 KW, 2200 rpm.
 Traction motors (2) type EE/506A
 Continuous Rating 400v, 235 amp., 115 H.P., 1010 rpm.
 Gear Ratios 79/16 & 70/16 = 21.6/1

CAPACITIES

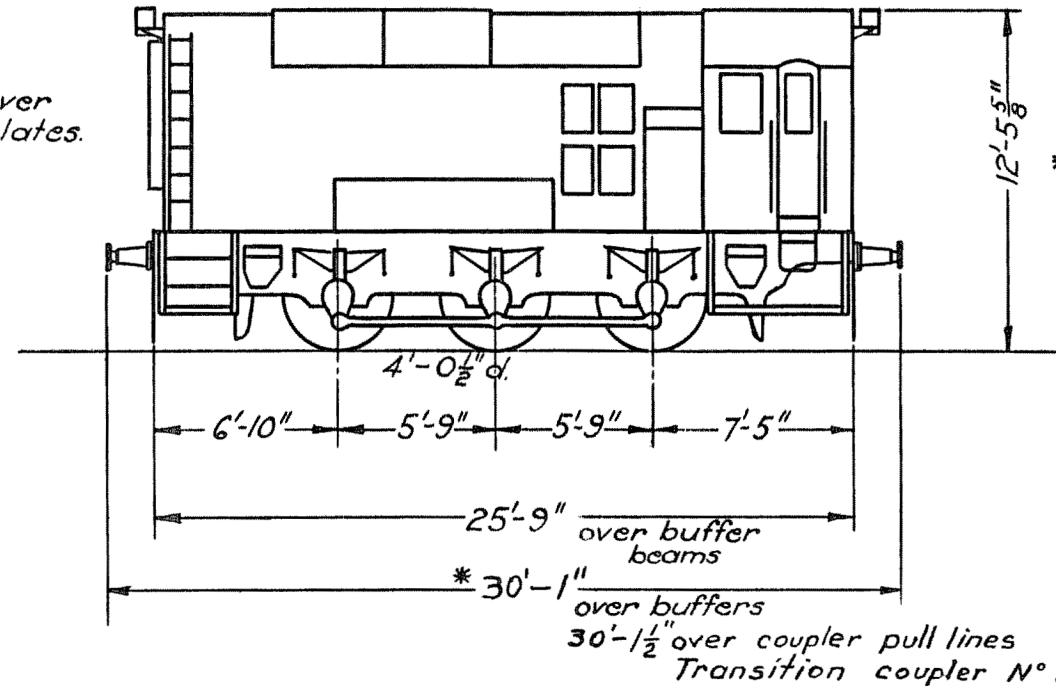
Fuel Oil Main Tank 585 Galls. Max. ϕ
 Service Tank 75 "
 Lubricating Oil 65 "
 Cooling Water 140 "

BATTERIES

40 cells 108 amp.hr. at 5hr. rate.
 ϕ Main Fuel Tank not to exceed 500 Galls. in service.

Numbers of Locomotives
 Built by The English Electric Co Ltd
 1951 Nos 201 to 210
 1957 No 211 purchased from S.E.C.
 (formerly S.E.C. 3)
 1959 Nos 212, 213, 214 purchased from S.E.C.
 (formerly S.E.C. 4,5,6)
 Total 14.5

Width 9'-1 3/8" over platform plates.



*Nos 201 to 208, 211 to 214 fully auto coupled
 28'-9" over coupler pull lines.

202, 205, 211, 212, 216

1/3/85 Total 5

Weight 16-7-0 16-10-0 16-14-0
 Roadworthy

Total T C ϕ
 49-11-0

VICTORIAN RAILWAYS

LOCO CLASS **F** DIESEL ELECTRIC SHUNTER

Date: 15-7-59.